



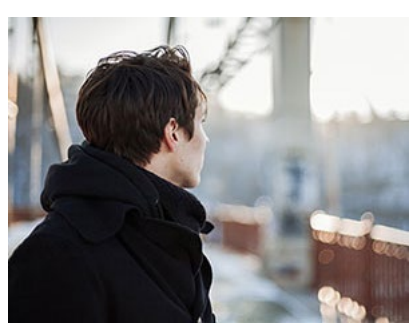
THE LATEST FROM THE SPH | FEBRUARY 2019



RESEARCH

Exercise Benefits Brains, Changes Blood Flow in Older Adults

Exercise decreases blood flow to key brain regions in older adults with memory loss, and improves their cognitive performance. [Learn More »](#)



RESEARCH

Lesbian, Gay and Bisexual Youth Overrepresented in Foster Care

Sexual minority youth are nearly 2.5 times more likely to end up in foster care - and stay there - than their heterosexual peers. [Learn More »](#)



RESEARCH

Toxic Pesticides on the Rise in Our Food

New research shows that neonicotinoid insecticides are increasingly prevalent in our foods and raises concerns about the cumulative risks of exposure. [Learn More »](#)



RESEARCH

Many with Both Opioid Use Disorder and Mental Illness Lack Treatment

Many individuals suffering from both opioid use and mental health disorders receive treatment for neither. The most common reasons for forgoing treatment include affordability and stigma. [Learn More »](#)



RESEARCH

Older African Americans Don't Receive Needed HIV Care

Older African Americans face higher rates of HIV infection and mortality than those of other racial groups, and are less likely to receive care. How can we do better to connect people to the HIV care they need? [Learn More »](#)



PHILANTHROPY IN ACTION

Fostering the Next Generation of Healthcare Leaders

In honor of LifeBridge Health President and CEO Neil Meltzer, MHA, MPH, LifeBridge Health has committed a \$50,000 gift to endow the new LifeBridge Health Maryland Promise Scholarship. [Learn More »](#)

STUDENT SPOTLIGHTS



STUDENT SPOTLIGHT

Community Health Students Start Camp Kesem Chapter

Born out of a BCH class project, the UMD chapter has fundraised \$32,000, hosted 32 campers, and trained 20 staff members in their first year. [Learn More »](#)



STUDENT SPOTLIGHT

Lakeshia Watson (Epidemiology and Biostatistics PhD Candidate)

Lakeshia knew from a young age that she was going to be a sexual health activist and advocate. At UMD, she is exploring the social and structural factors of HIV and sexually transmitted infections among vulnerable populations. [Learn More »](#)

FEATURED EVENTS

SEVENTH ANNUAL PUBLIC HEALTH RESEARCH @MARYLAND

HEALTH & WELL-BEING FOR ALL
4.02.2019
ADELE H. STAMP STUDENT UNION
WORKING TOGETHER ACROSS SECTORS

REGISTRATION NOW OPEN | publichealthresearch.umd.edu

Join us Tuesday, April 2 for the seventh annual Public Health Research at Maryland event. US Surgeon General Jerome Adams will be our keynote speaker and hold a town hall for participants to discuss pressing public health issues.

The event will take place from 9 am to 3:30 pm at the UMD (College Park) Adele H. Stamp Student Union. Registration is free and lunch is provided. [Register Now »](#)

Visit publichealthresearch.umd.edu to learn more!
Questions? Contact phm@umd.edu.

STUDENT OPPORTUNITIES

New! Study Abroad in Bolivia this Summer

Apply by March 1, 2019 for the chance to meet with indigenous community members and leading experts in ecohealth, protected areas management and agroecology as well as health professionals who provide care in remote areas of the Bolivian Amazon. [Learn More and Apply Today »](#)

Additional short term study abroad courses include Cuba and India. [Learn More and Apply »](#)

SPH IN THE NEWS

WJLA

How Couples can Improve Their Financial Literacy and Management » Highlights the TOGETHER program, founded by Family Science faculty members Jinhee Kim and Mariana Falconier.

Trainer Steve Jordan '98 | I Am Healthy & Fit Podcast

I Am Healthy & Fit with Dean Boris Lushniak » KNES alumnus interviews SPH Dean Boris Lushniak, MD, MPH.

NJTV

Trauma's Tragedy and Treatment: So Much to Unpack » Natalie Slopen, assistant professor of epidemiology and biostatistics, is interviewed about childhood trauma's impact on lifelong health.

DiamondBack

Family and Students Mourn UMD's Robin Sawyer, Who Taught Wildly Popular Sexuality Class » Covers the memorial service for behavioral and community health Professor Robin Sawyer.

Maryland Today

Equal Protection, From Floods » Highlights the work of Shifali Mathews a€™20 (Public Health Science) on the Gemstone Honors Program team, E-Justice.

Science

A Sense of Belonging Matters. That's Why Academic Culture Needs to Change » Quotes Stephen Thomas, director of the Maryland Center for Health Equity and professor of health services administration.

SPH ON SOCIAL MEDIA



Note: If you've never seen [SPH Dean] @BDLushniak speak, it is almost impossible to capture his spirit. He cannot be contained by stages, microphone cords, the most skilled camera operators or 280-character tweets. #SpeakForHealth



How does it feel to hold the Lombardi Trophy? Just ask Life Sciences Scholars alum Cross Klemko, who's building upon his 2016 KNES degree from #UMD with a recent masters...and an internship with the @Patriots training staff! #Is4! #WeAreScholars @UMDPublicHealth

UPCOMING EVENTS

- FEB 26** Insights into the Dynamics of Aging: Current Research at UMD
2 - 3:45 pm | McKeldin Library
- MAR 6** Giving Day
All Day | Online
- MAR 8** Public Health Action for Civic Engagement (PHACE) Leadership Workshop for Undergrad & Graduate Students
1:00 pm - 5:00 pm | UMD SPH Building, Room 2236
- MAR 11** Fearless Conversations: Global Health Stories
6:30 pm - 8:30 pm | Bindaas Cleveland Park
- MAR 28** 2019 Gold Public Health Innovation Award Competition
12:00 pm - 2:00 pm | Location to be announced

MAR 29 2019 Gymkana Home Show and Alumni Network Reception
5:30 pm - 9:00 pm | Xfinity Center

APR 2 Public Health Research Day 2019
8:30 am - 3:30 pm | Adele H. Stamp Union

APR 24 Teach-In on Activism to Prevent Gun Violence
4:15 pm - 6:00 pm | Edward St. John Building, Room 1224

APR 24-25 Gun Violence Prevention: A National Research Collaboration Summit (Invitation Only)
8:30 am - 3:00 pm | UMD SPH Building

[ABOUT US](#)

[EVENTS](#)

[GIVING](#)



SCHOOL OF
PUBLIC HEALTH

School of Public Health, University of Maryland
4200 Valley Drive, Suite 2242 / College Park, MD 20742
301.405.2438 / 301.405.8397 / sph.umd.edu

